

A yellow oval logo with a green border. Inside, the word "Danes" is written in large green letters, with "melvyn" in smaller green letters above it. Below "Danes" is the text "ESTATE AGENTS" in smaller green letters.

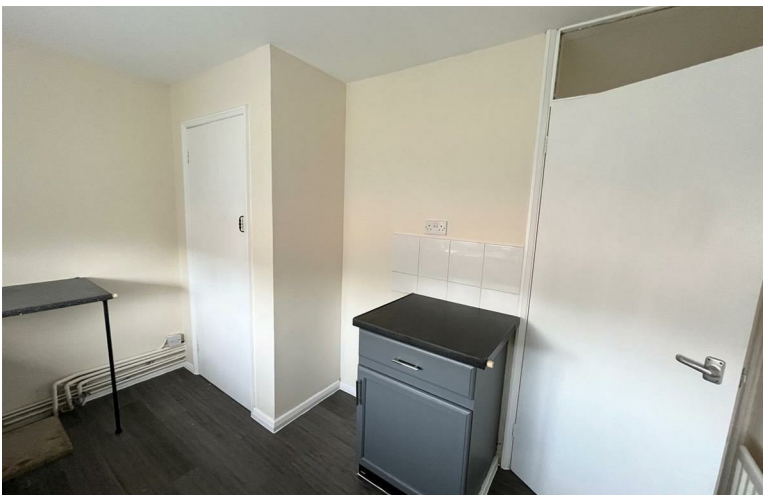
**melvyn  
Danes**  
ESTATE AGENTS

A photograph of a two-story red brick house with a dark tiled roof and two chimneys. The house has several white-framed windows. In front of the house is a large, well-maintained green lawn. To the left, there is a paved path leading to the house, bordered by some shrubs. To the right, there is a wooden fence. The sky is blue with some light clouds.

**Marion Way  
Hall Green  
£825 Per Month**



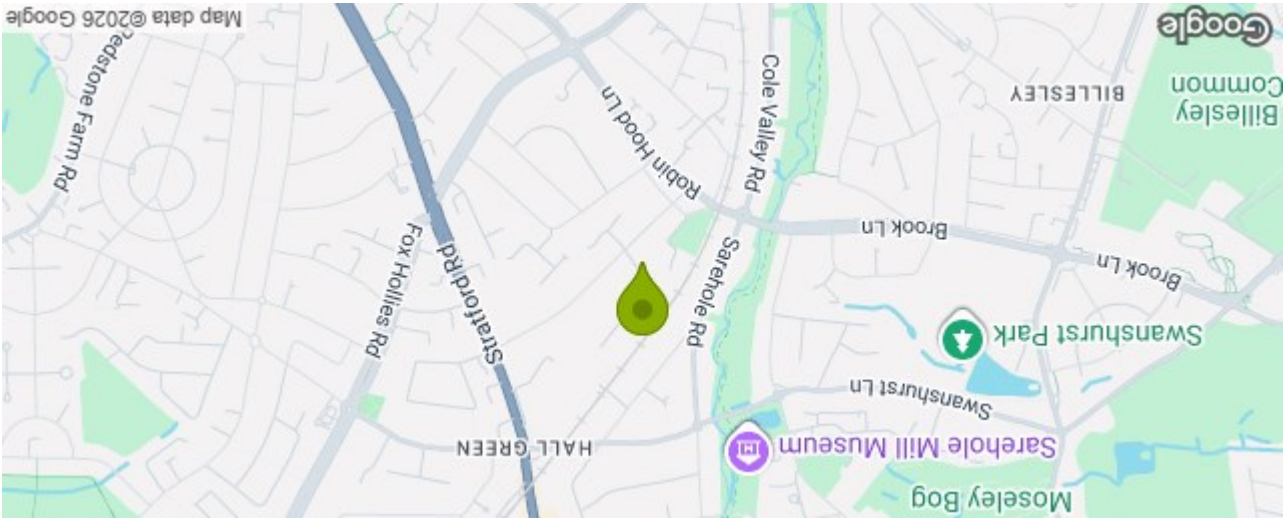
# Description



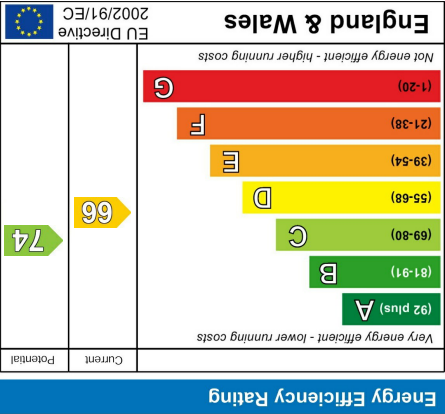
## Accommodation







35 Marion Way Hall Green Birmingham B28 0BJ  
Council Tax Band: B



Please note that all measurements and floor plans are approximate and quoted for general guidance only and whilst every attempt has been made to ensure accuracy, they must not be relied on and do not form part of any contract.